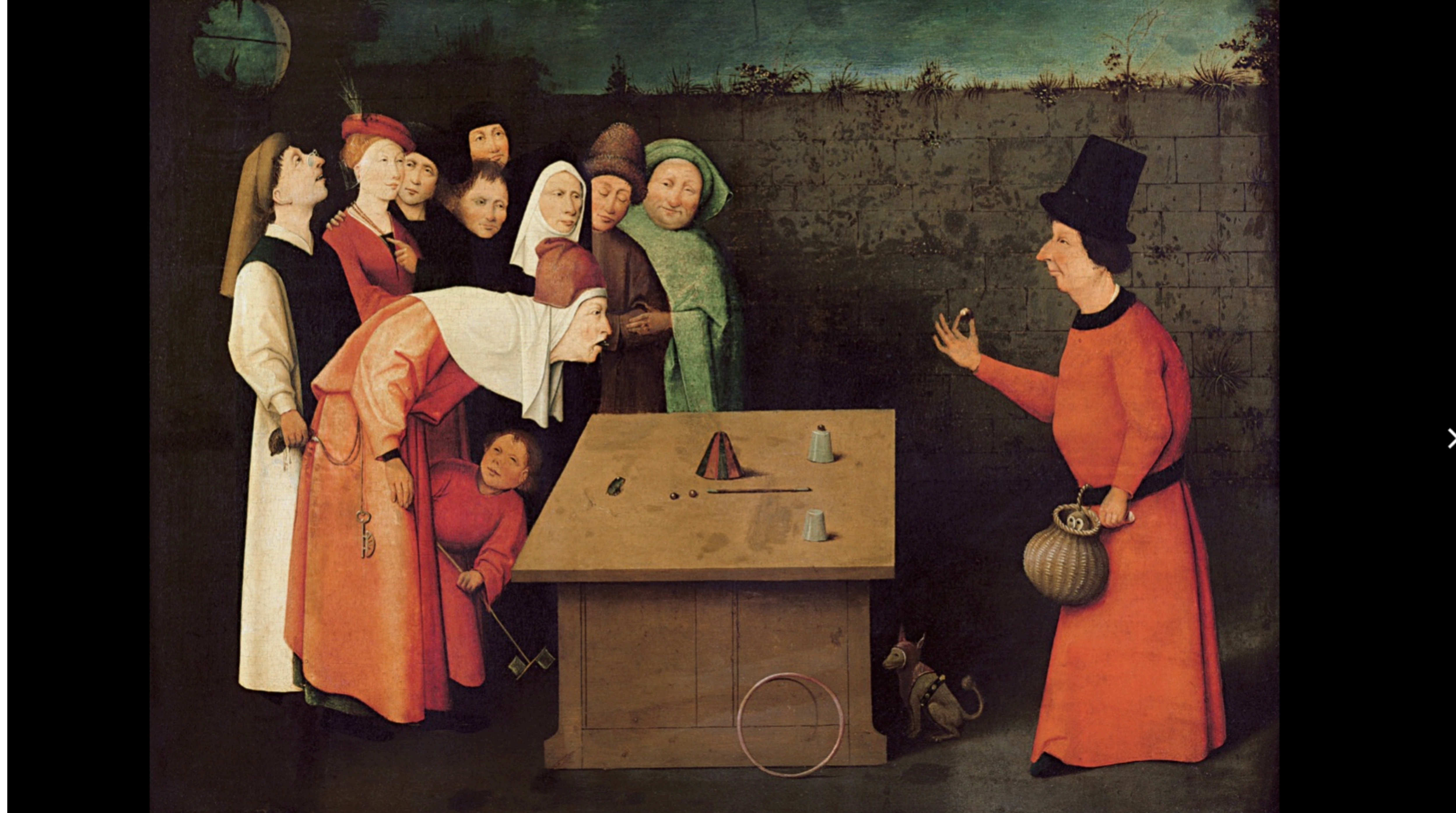
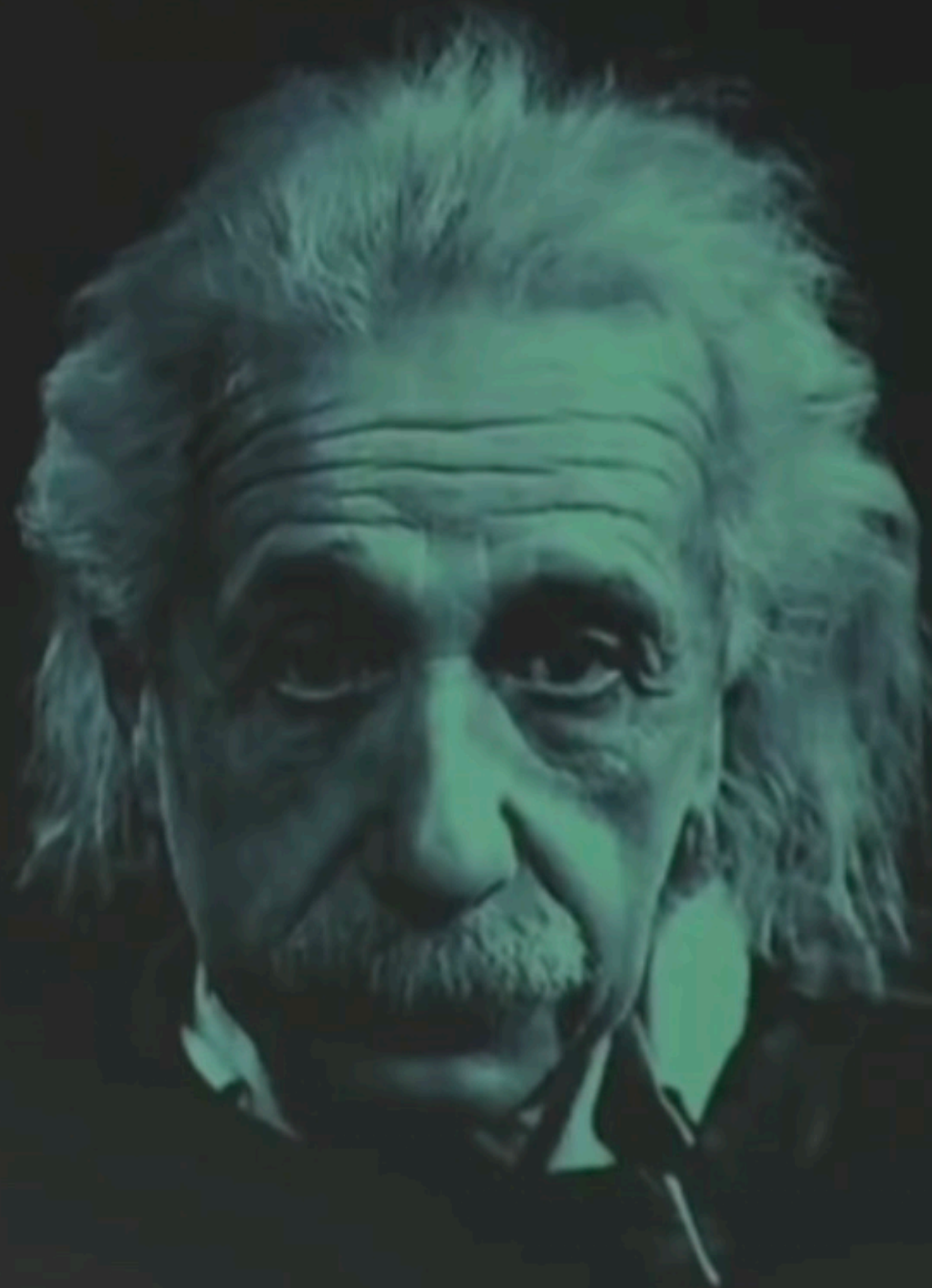


**COLLECTIUS  
PEL  
DECREIXEMENT  
BERGUEDÀ / RIPOLLÈS**



"THE WORLD WILL NOT BE  
**DESTROYED**  
BY THOSE WHO DO EVIL,  
BUT BY THOSE WHO  
**WATCH**  
THEM WITHOUT DOING  
**ANYTHING**"

*Albert Einstein*



El mundo no será  
**DESTRUIDO**  
por aquellos que  
hacen el mal,  
sino por aquellos  
que los  
**CONTEMPLAN**  
sin hacer  
**NADA**



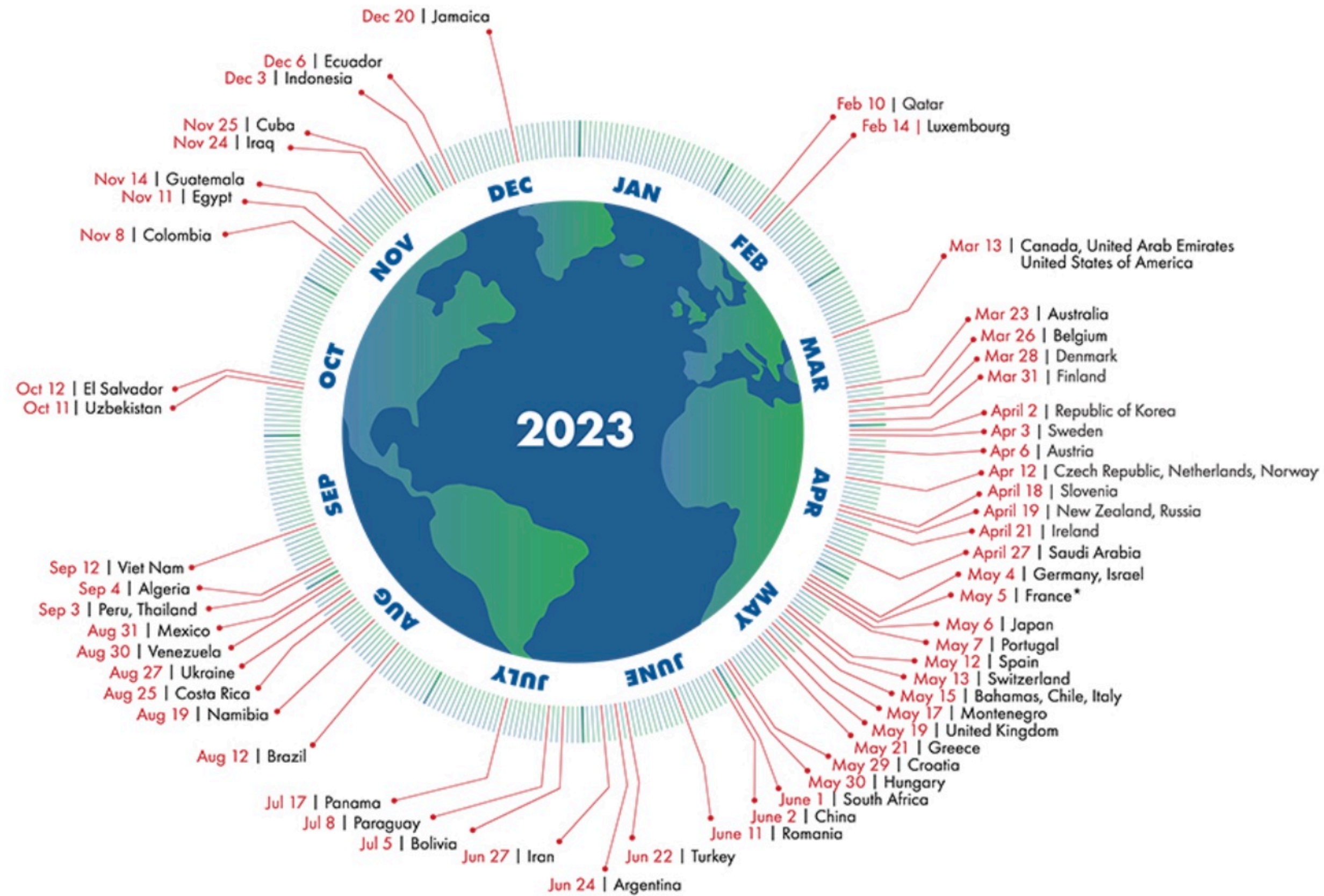




**Els polítics debaten el canvi climàtic**

# Country Overshoot Days 2023

When would Earth Overshoot Day land if the world's population lived like...

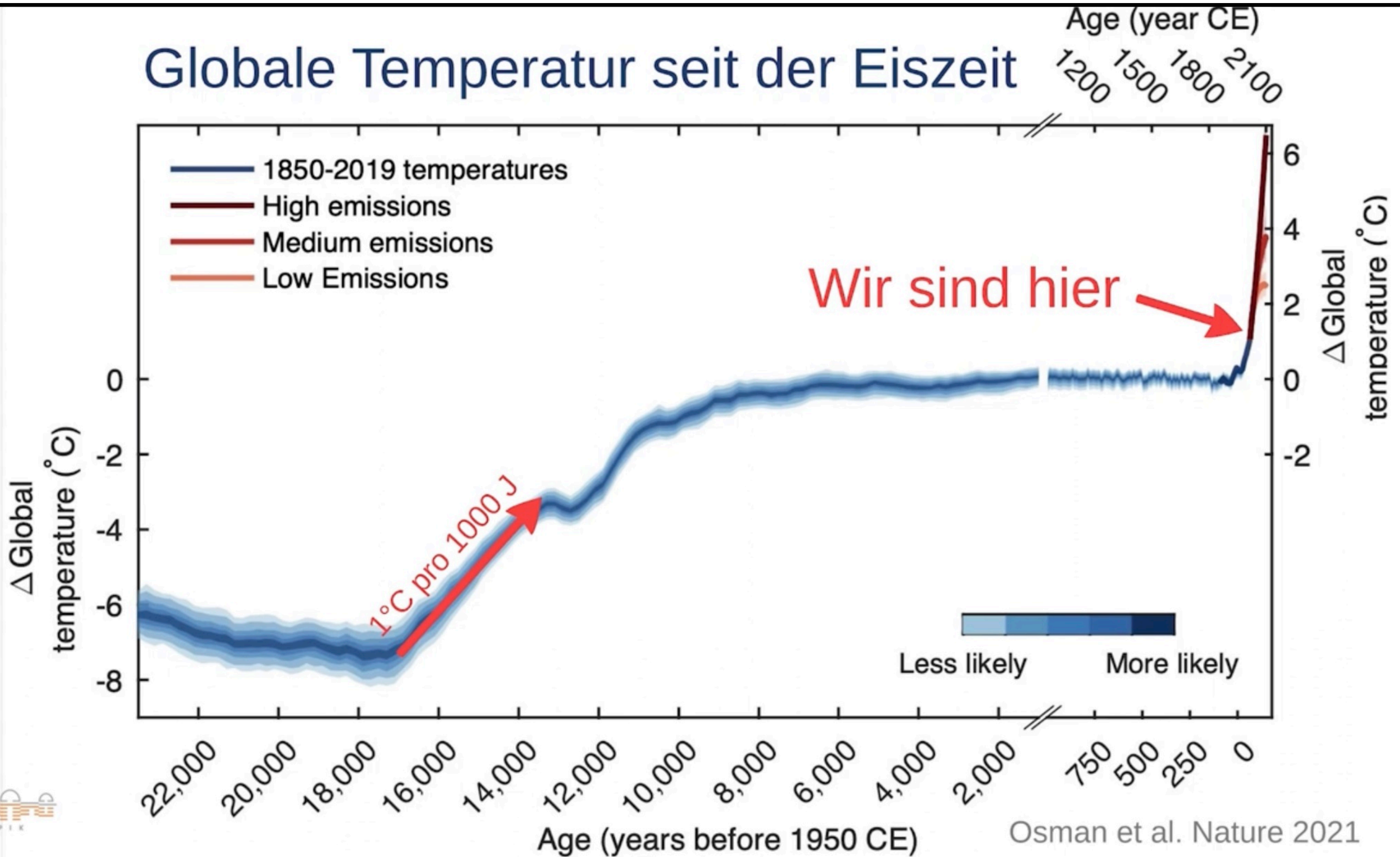


For a full list of countries, visit [overshootday.org/country-overshoot-days](https://overshootday.org/country-overshoot-days).  
 \*French Overshoot Day based on nowcasted data. See [overshootday.org/france](https://overshootday.org/france).

Source: National Footprint and Biocapacity Accounts, 2022 Edition  
[data.footprintnetwork.org](https://data.footprintnetwork.org)



# Globale Temperatur seit der Eiszeit



Osman et al. Nature 2021

en algun lloc trinxen cossos per a què jo pugui viure en la meva merda

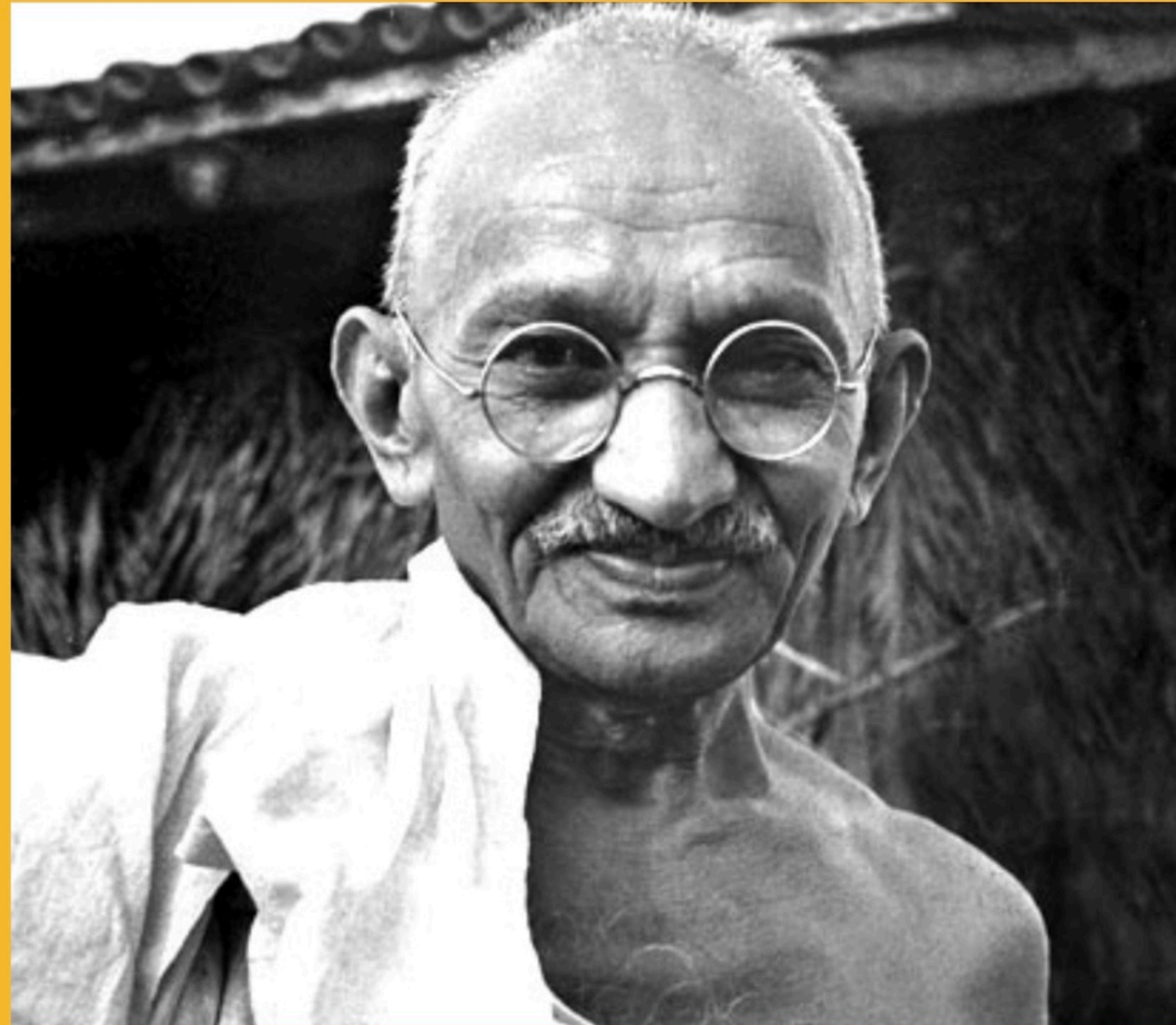


## CONFERÈNCIA NORD-SUD



**Si vols tenir una vida fàcil, queda't sempre en el ramat,  
venera al pastor  
i mostra respecte a les dents del seu gos**

**Mahatma Gandhi (1858-1948)**



**"Quan una llei és injusta, el que és correcte és desobeir-la."**



**Punt crític**





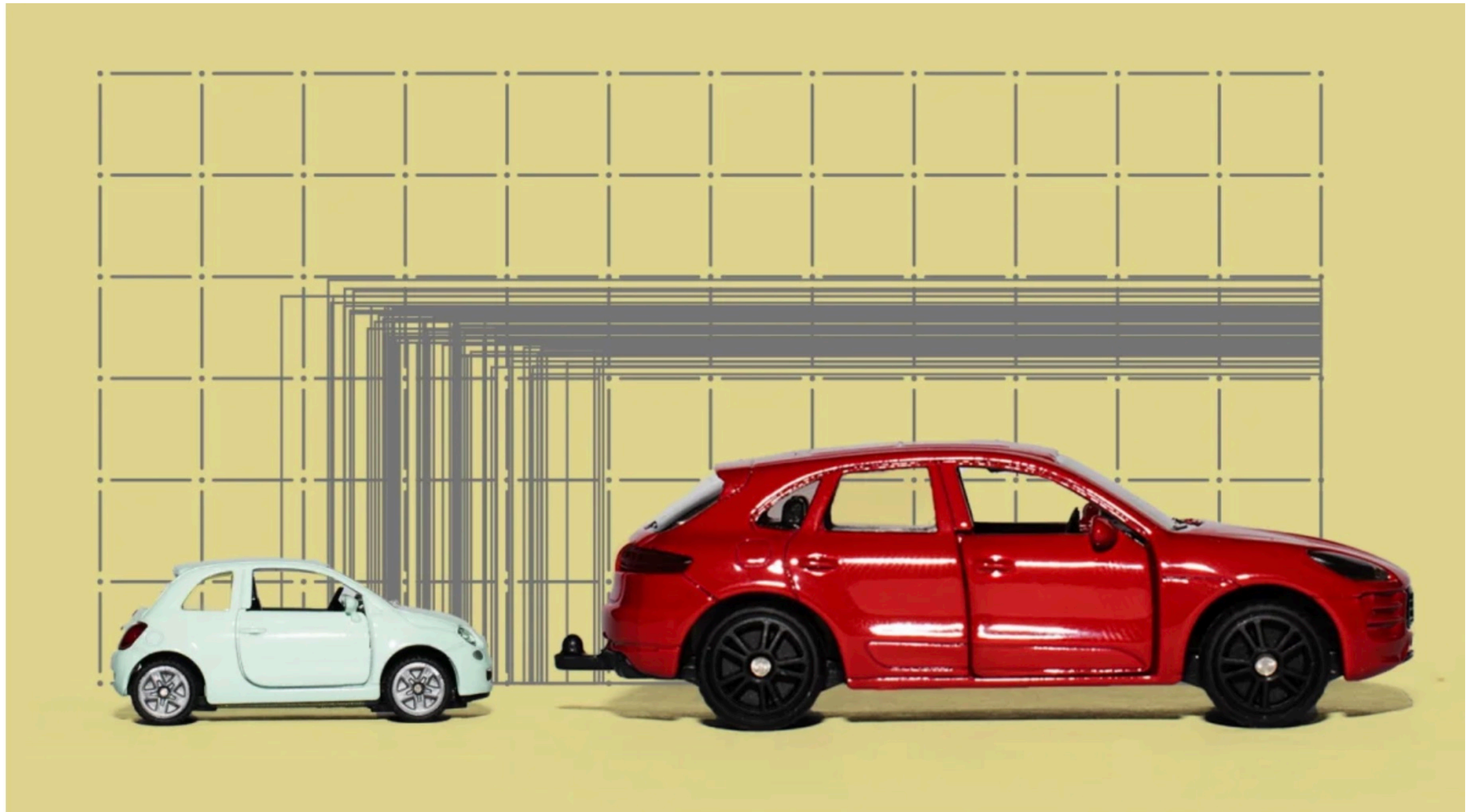
Polnische Soldaten an der Grenze zu Belarus Foto: Dominika Zarzycka / NurPhoto / Getty Images

A large oil tanker ship is shown from an elevated perspective, sailing on a blue ocean. The ship's deck is visible, featuring various structures, pipes, and a prominent yellow mast. The ship is moving towards the right, leaving a white wake behind it. The sky is clear and blue.

# PETROLI

**90.000.000 Barrils de Petrolí / Dia**  
(Un Barril són 159 Litres)

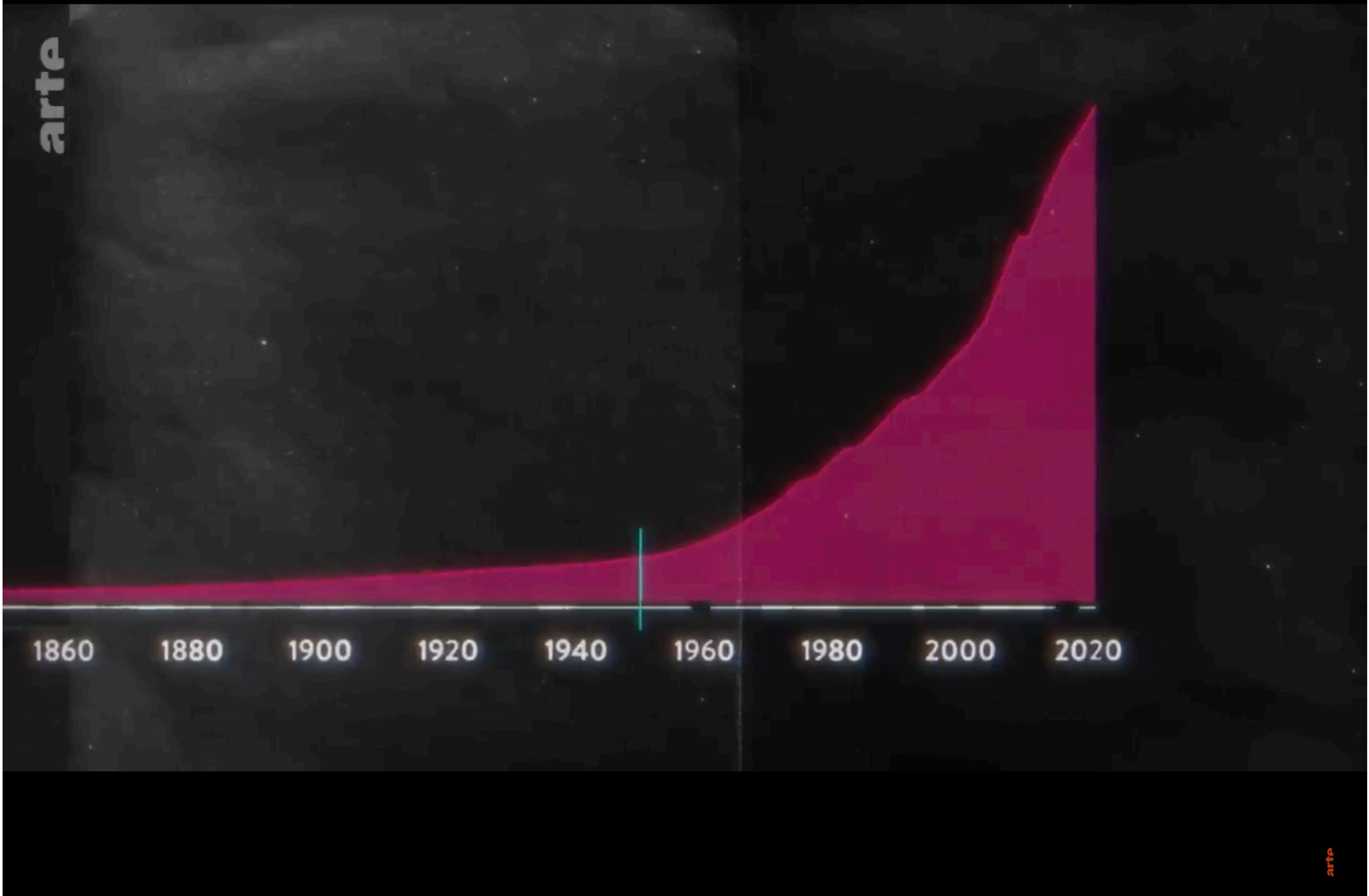
(oder 30 Milliarden Fass globaler Erdölverbrauch pro Jahr)



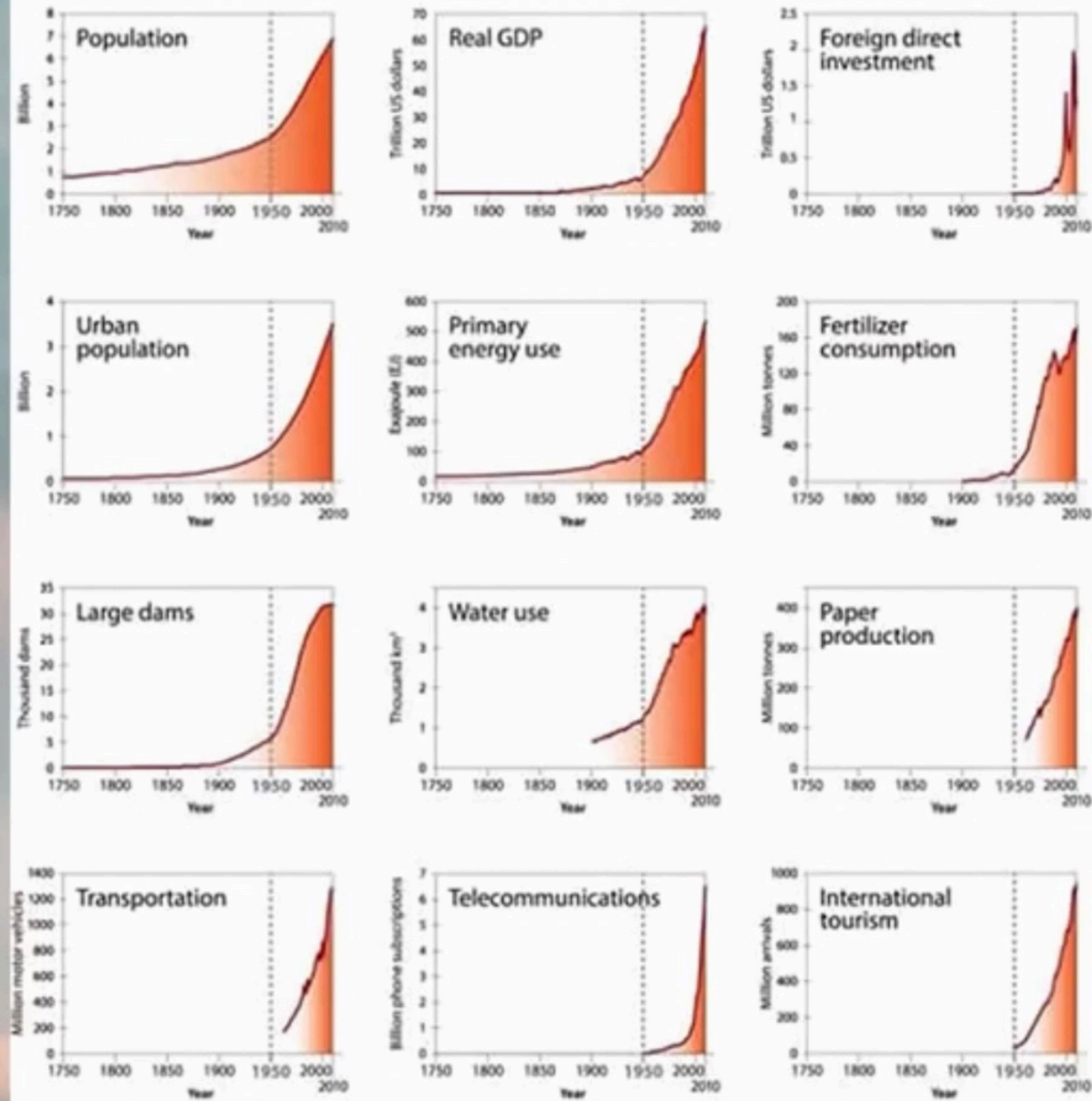


-  **Surface Parking**
-  **Occupiable Buildings**

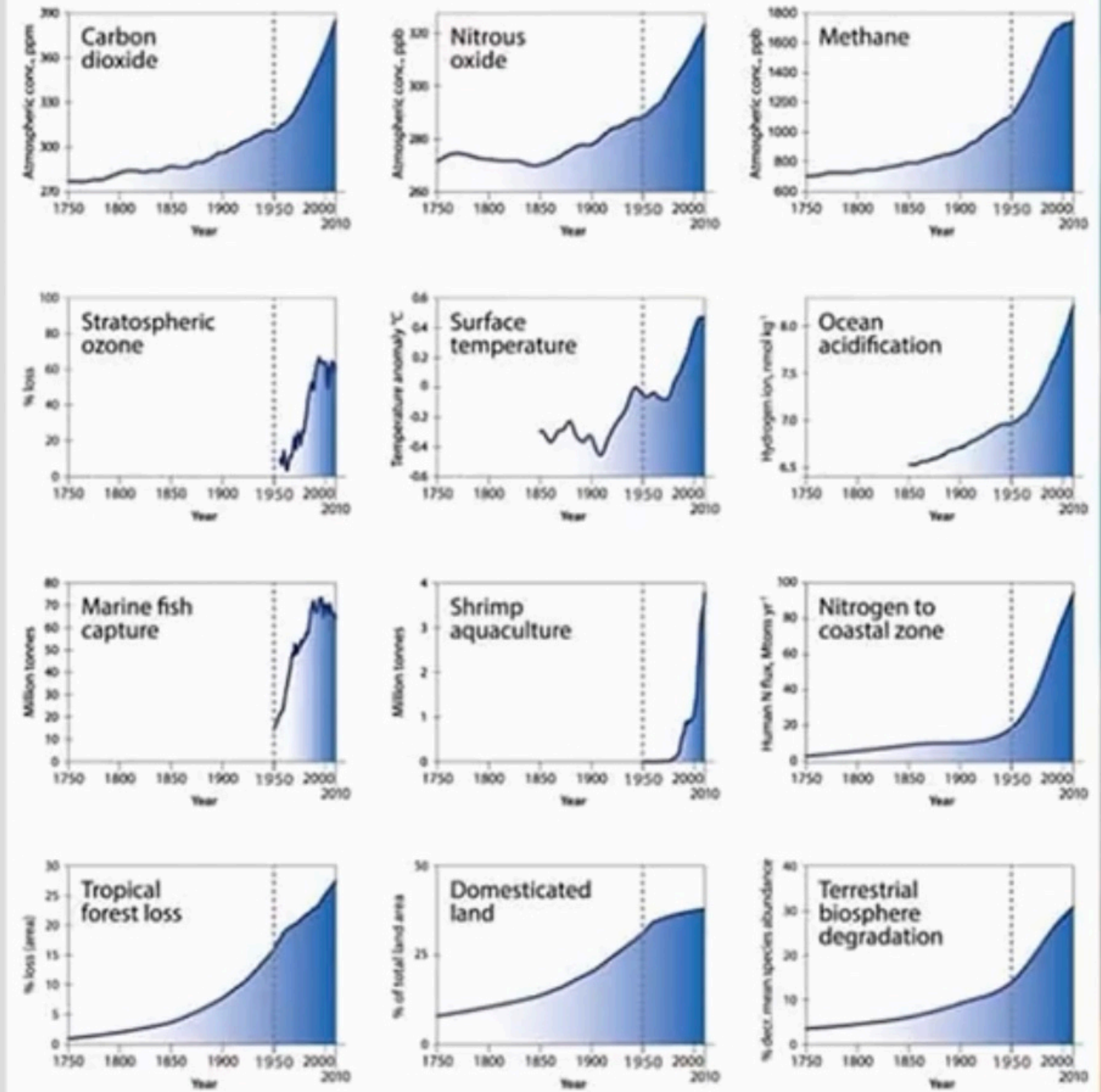




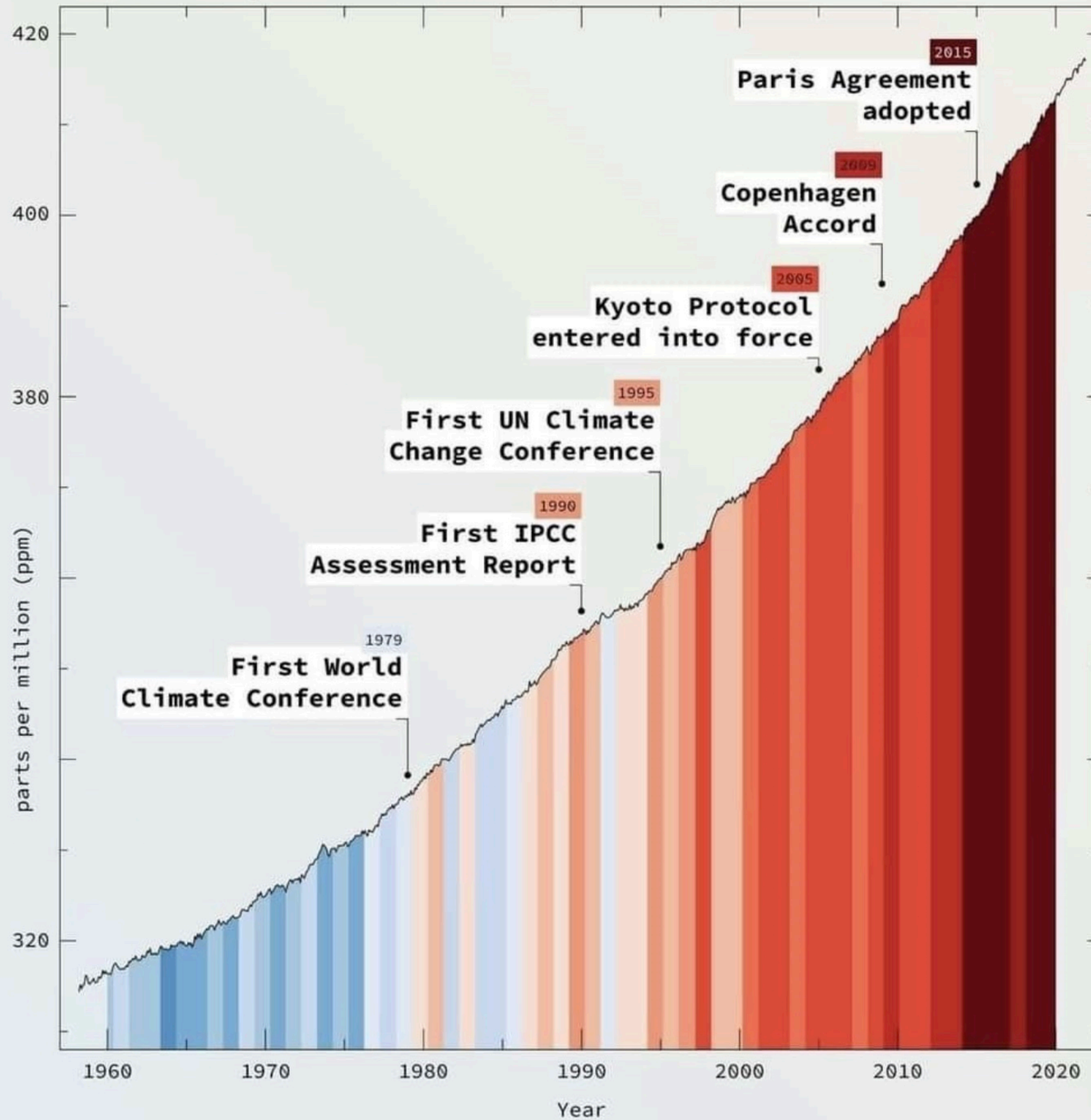
## Socio-economic trends



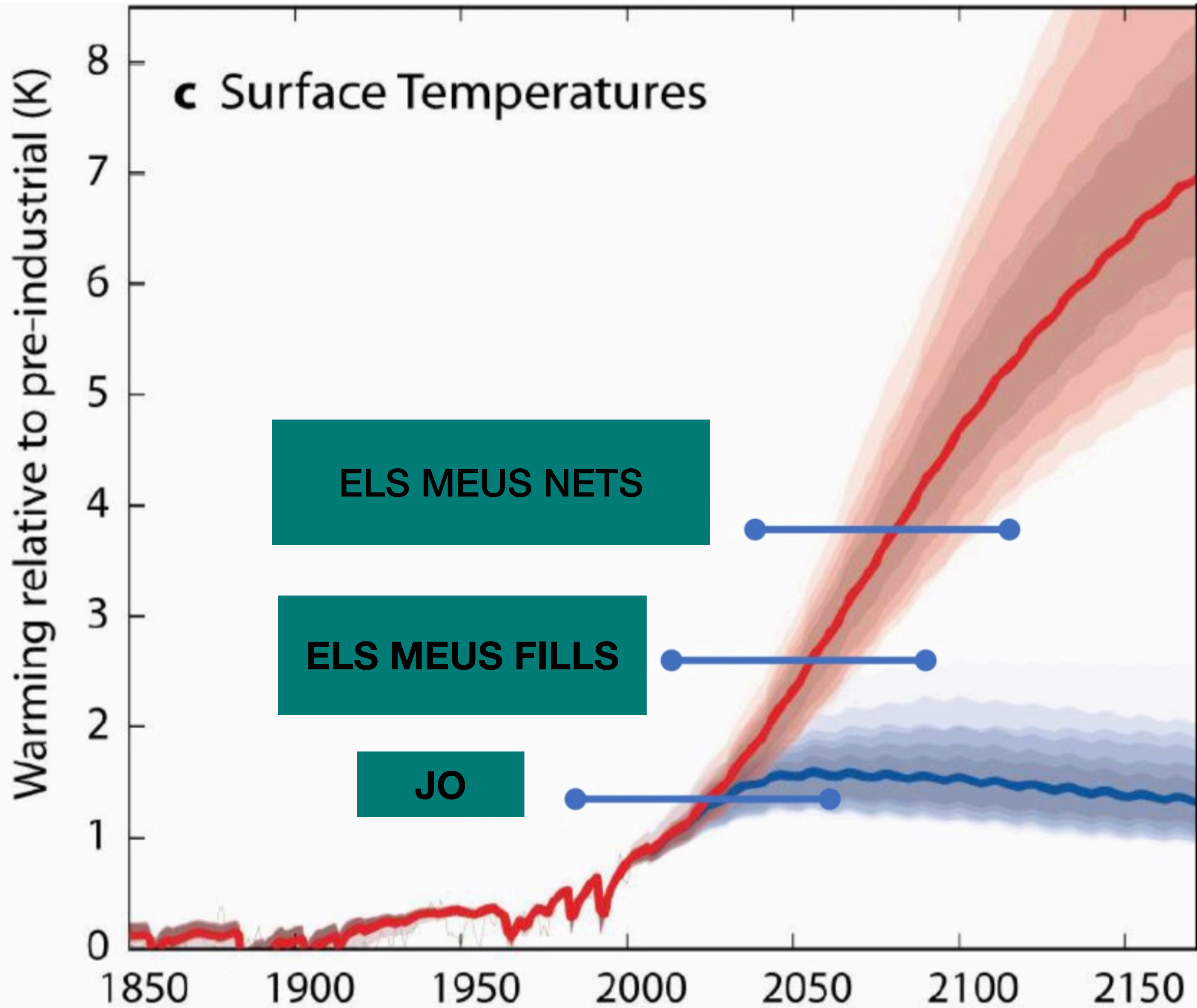
## Earth system trends

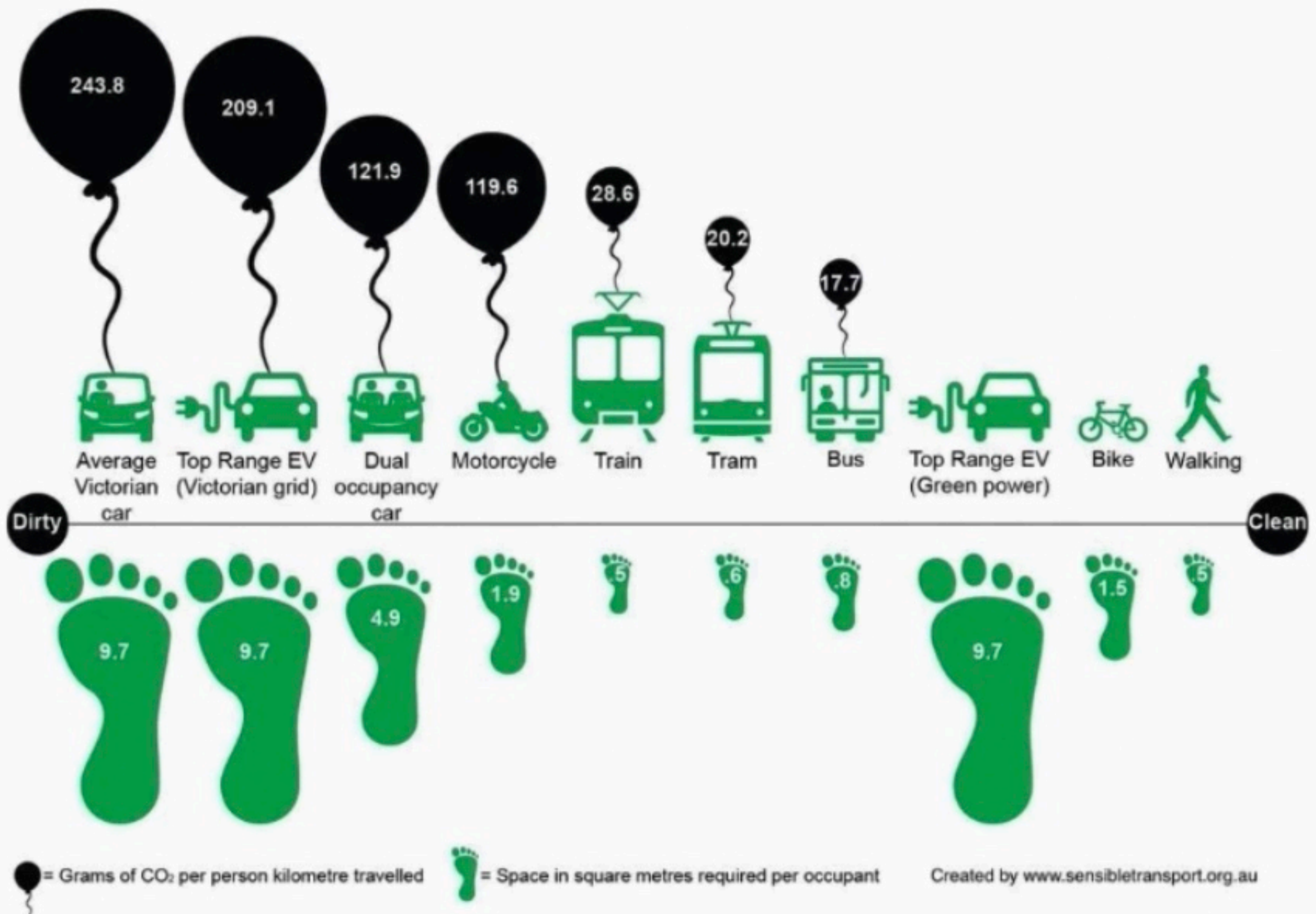


Trends in Atmospheric CO<sub>2</sub> vs Global Temperature Change

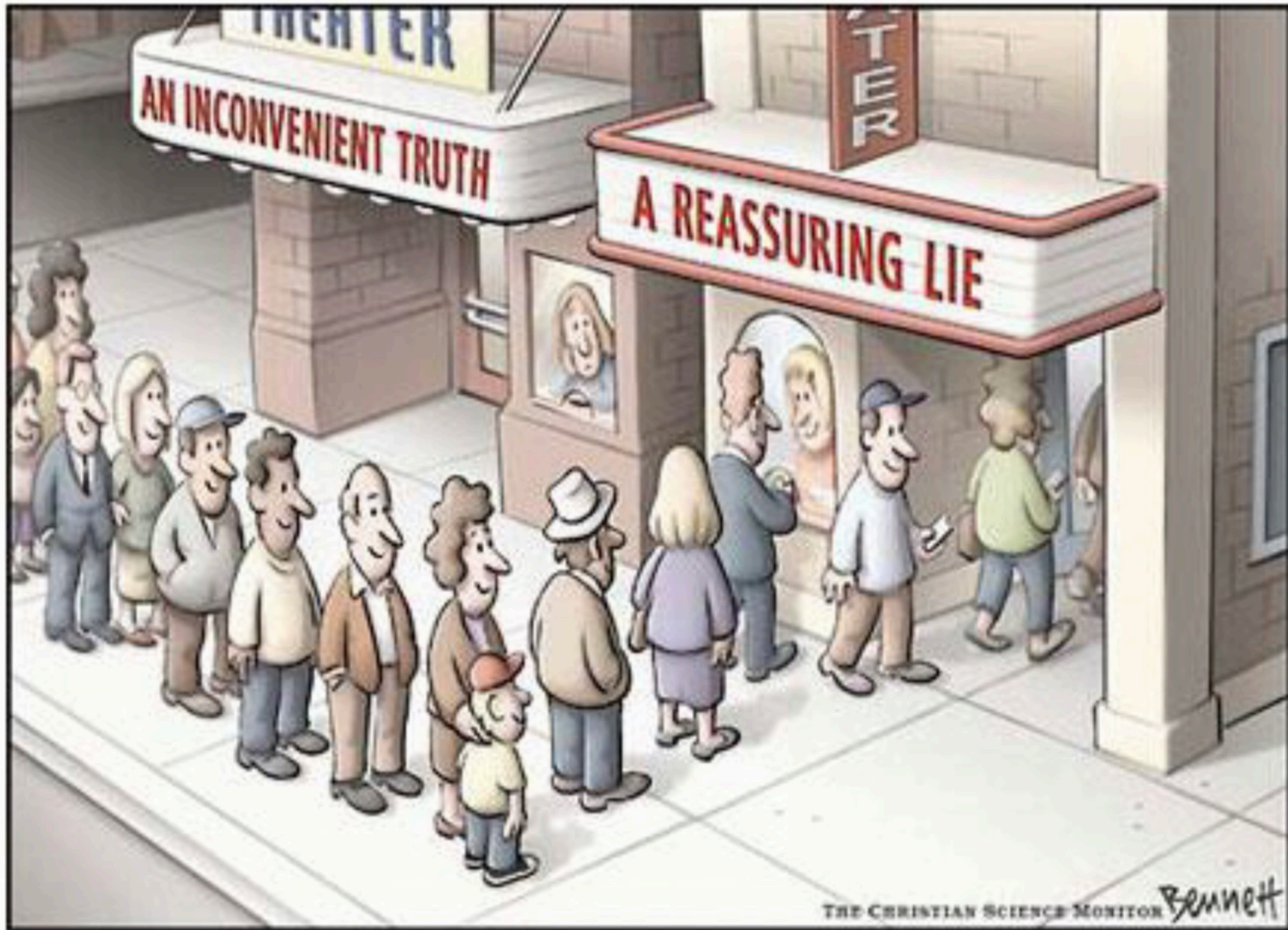


Composite Graph of: Atmospheric CO<sub>2</sub> at Mauna Loa Observatory, December 2021 – Scripps Institution of Oceanography & NOAA Global Monitoring Laboratory | #ShowYourStripes – Graphics & lead scientist: Ed Hawkins, National Centre for Atmospheric Science, University of Reading; Data: UK Met Office | Design by: sustentio [PG] | Licence: CC-BY



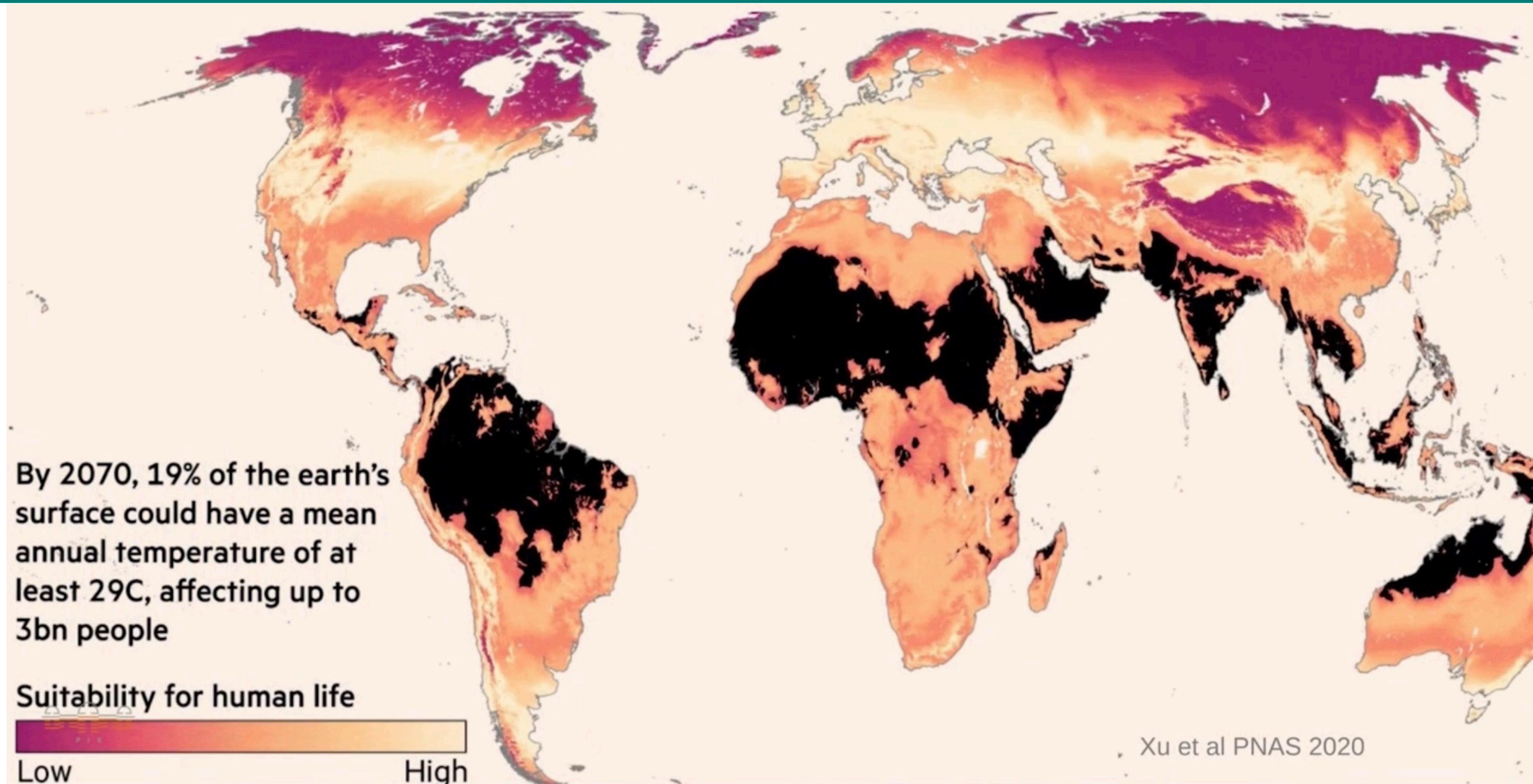






THE CHRISTIAN SCIENCE MONITOR Bennett

# Con un calentamiento de 3,3 grados un gran parte de la tierra sería inhabitable





# Quatre R + 1

**Reduir**

**Reutilitzar**

**Reciclar**

**Reflexionar**

**Decreixer**